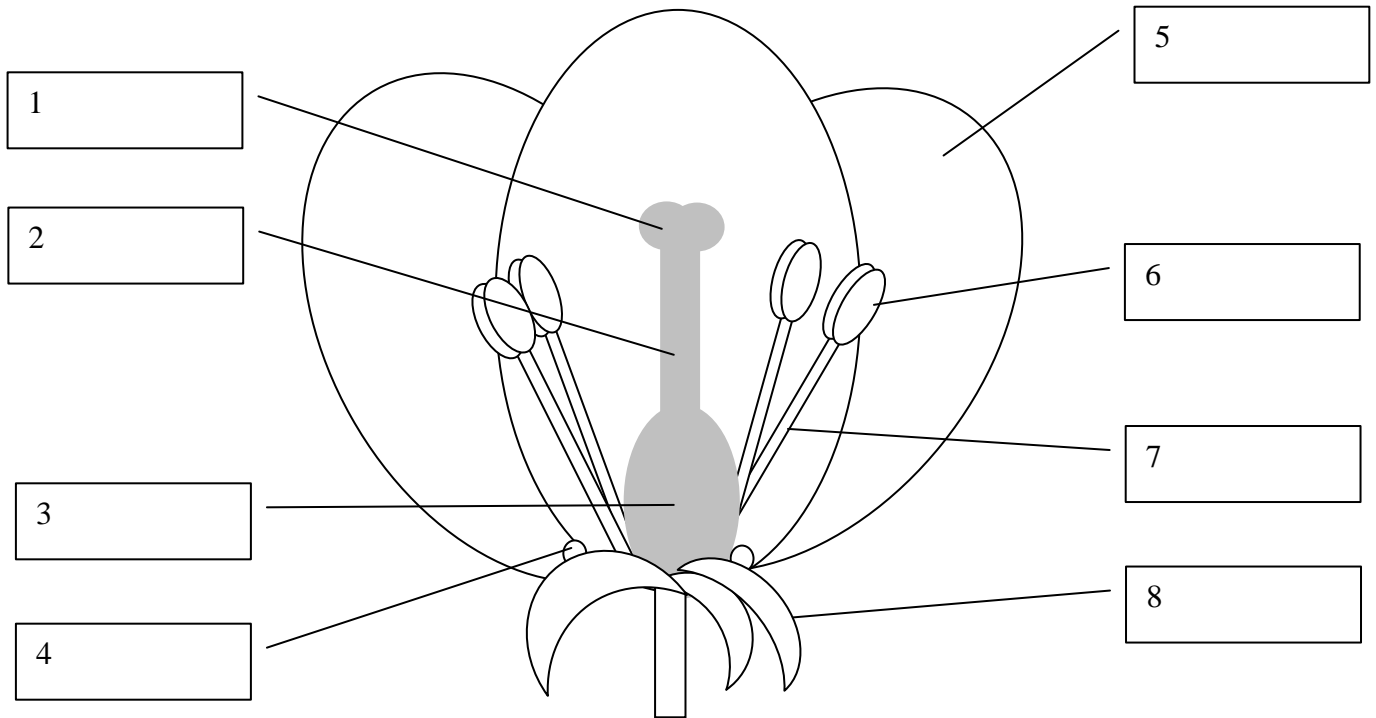


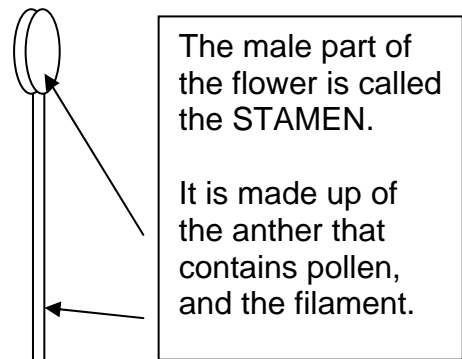
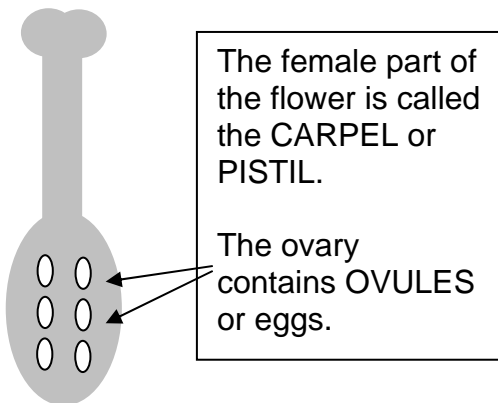
## Flower Parts Worksheet

Label the flower using the words provided below.

ANTHER   STYLE   FILAMENT   NECTARY   PETAL   SEPAL   OVARY   STIGMA



Extra information.



---

**ANSWERS:** 1 stigma 2 style 3 ovary 4 nectary 5 petal 6 anther 7 filament 8 sepal

For each flower part, connect it to its location and function by joining the dots.

**Name of flower part**

**Location and function**

Carpels ●	● Protective coverings on the outside of the flower – usually green
Nectary ●	● The male sex organs that produce pollen (anther + supporting filament)
Petals ●	● The female sex organs that produce ovules (ovary + style + stigma)
Sepals ●	● Produces sugary liquid that attracts insects at base of petals
Stamens ●	● Inside sepals and often coloured to attract pollinating insects

The flower has both male and female parts.

**Male.**

There are two parts that make up the male part of the flower. They are the \_\_\_\_\_ and the \_\_\_\_\_. The whole male part is called the \_\_\_\_\_.

**Female.**

There are three parts that make up the female part of the flower. They are the \_\_\_\_\_, \_\_\_\_\_ and the \_\_\_\_\_. The whole female part is called the \_\_\_\_\_.

---

**ANSWERS**

Carpels – The female sex organs; Nectary – produces sugary liquid; Petals – inside sepals and often coloured; Sepals – Protective covering; Stamens – The male sex Organs

**Male.**

There are two parts that make up the male part of the flower. They are the ANTHHER and the FILAMENT. The whole male part is called the STAMEN.

**Female.**

There are three parts that make up the female part of the flower. They are the STIGMA, STYLE and the OVARY. The whole female part is called the CARPEL.